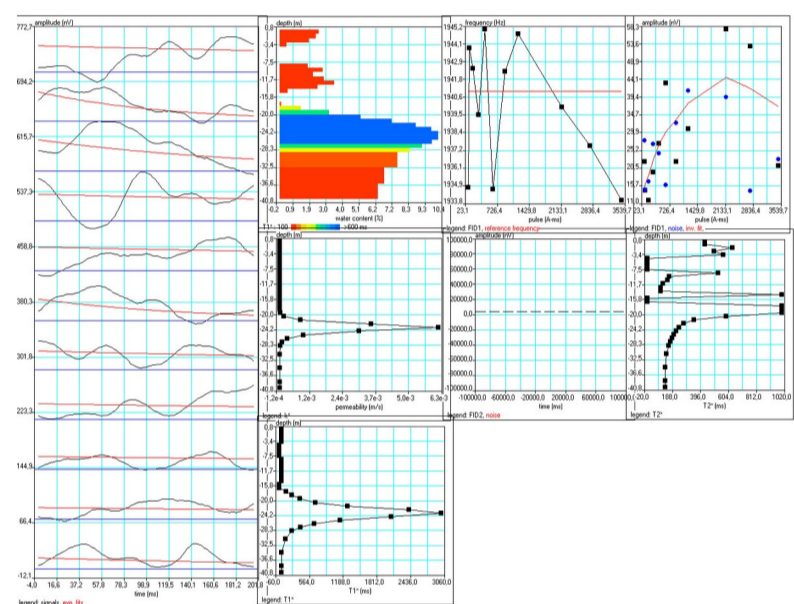


## Magnetic Resonance Sounding (MRS) Workshop

Understanding the presence and characteristics of shallow groundwater is crucial in shallow geothermal exploration. Groundwater significantly influences the efficiency and design of geothermal systems in several ways.

**Magnetic Resonance Sounding (MRS)**, also known as Surface Nuclear Magnetic Resonance (SNMR), is a non-invasively geophysical technique primarily employed for groundwater exploration. It operates by emitting a high-frequency electromagnetic signal, tuned to the Larmor frequency of hydrogen protons, into the subsurface. This excitation causes hydrogen nuclei in water molecules to produce measurable magnetic resonance signals, enabling the detection and characterization of groundwater reservoirs.

The workshop, led by local geologist Xavier Ros Visús, will be a practical demonstration of how an MRS survey is conducted and interpreted.



**WHERE:** Somewhere near Benasque WHEN 5 June 2025, 09:30 – 13:30

**Participation in this workshop is compatible with attendance at the THERMAL RESPONSE TEST workshop. The two activities will be held outdoors near each other, and the technical stops of one workshop will coincide with the activity times of the other.**

**REGISTRATION:** The course is offered free of charge. However, participants must be fully registered for the Geo-RIN Conference. Registration is handled via the conference website on a first-come, first-served basis.

**LANGUAGE:** The workshop will be conducted in Spanish.

**CONTACT and INFORMATION:** Xavier Ros Visús [geoterna@gmail.com](mailto:geoterna@gmail.com)

GEOTERNA Pirineus SLU, Camino Pasarrés s/n, Bailo (Huesca)

[www.geoternapirineus.com](http://www.geoternapirineus.com)