

Topological phases in the context of non-Hermitian physics

Flore K. Kunst

flore.kunst@fysik.su.se

Benasque

February 26, 2019



**Stockholm
University**

In collaboration with:

Emil J. Bergholtz

Jan Carl Budich

Elisabet Edvardsson

Johan Carlström

*Knut och Alice
Wallenbergs
Stiftelse*

Dissipation

Non-Hermitian Hamiltonians $H \neq H^\dagger$ describe dissipation

Relevant for, e.g., optical systems with gain and loss

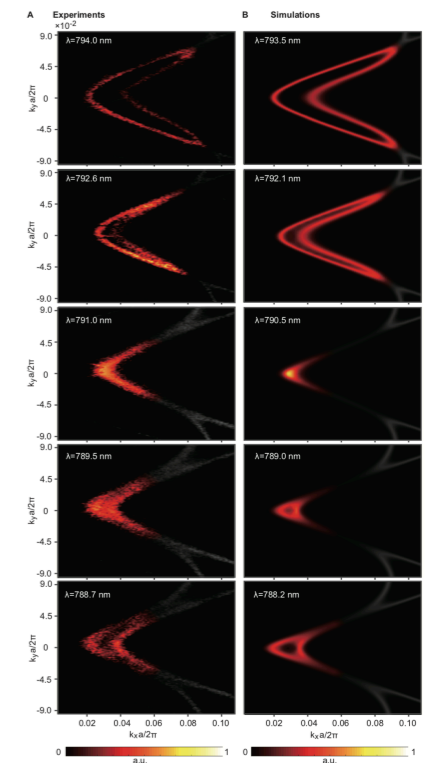
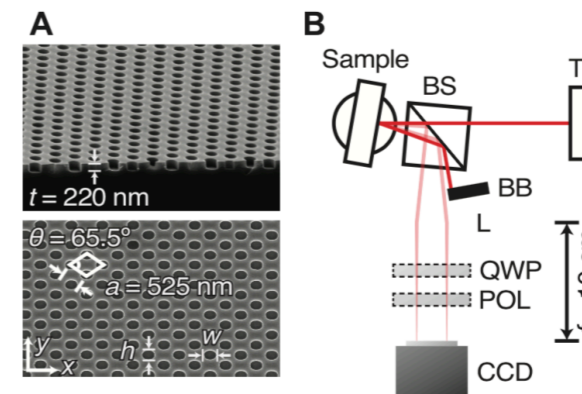
PT symmetry: real spectrum in the PT-unbroken phase Bender and Boettcher, PRL **80**, 5243 (1998).

Toy alternative of the Lindblad master equation

Review article: Martinez Alvarez, Barrios Vargas, Berdakin, and Foa Torres, Eur. Phys. J. Spec. Top. **227**, 1295 (2018).

Experimental observation of Fermi arcs in two dimensions

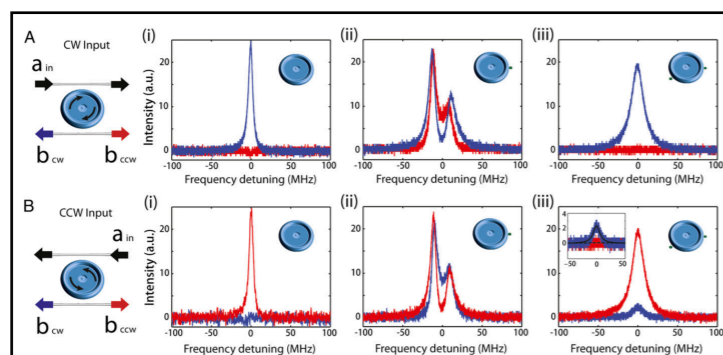
Zhou et al., Science **359**, eaap9859 (2018).



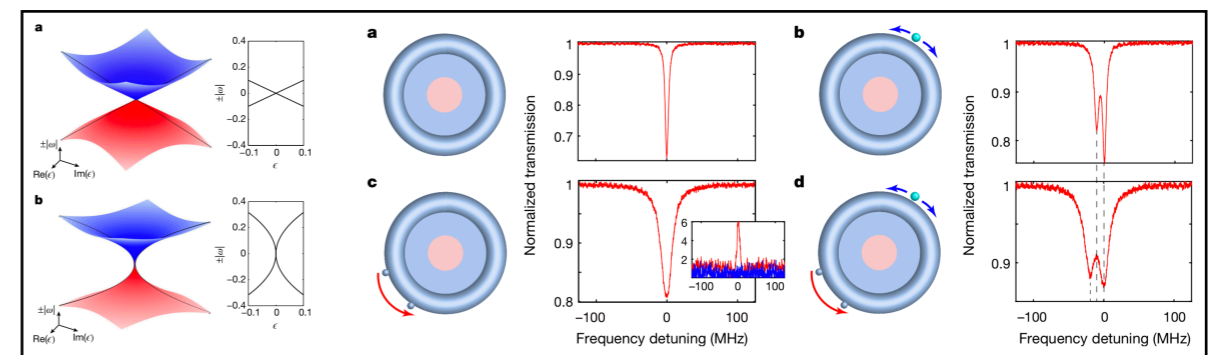
Spectrum features exceptional points, which behave vastly different from their Hermitian counterparts

Unidirectional transmission

Enhanced sensitivity



Peng et al., PNAS **113**, 6845 (2016).



Chen et al., Nature **548**, 192 (2017).

In this talk

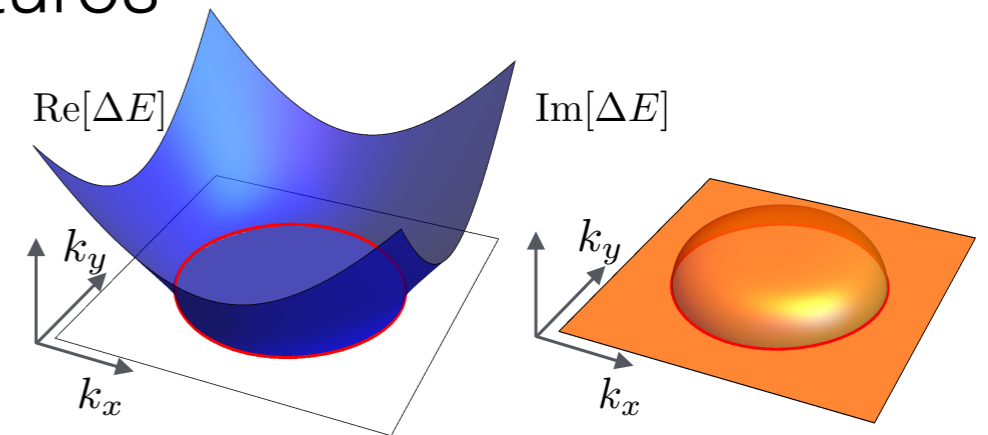
Discuss basics of non-Hermitian matrices

$$H = \begin{pmatrix} 0 & 1 \\ 0 & 0 \end{pmatrix}$$

Generic appearance of exceptional structures

In the presence of symmetries

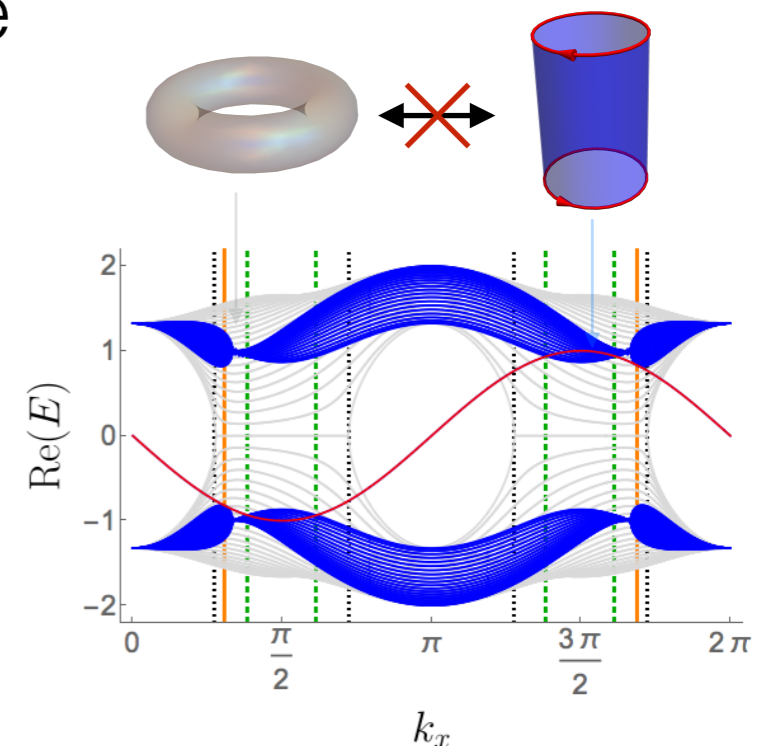
Jan Carl Budich, Johan Carlström, **Flore K. Kunst**, and Emil J. Bergholtz, Phys. Rev. B **99**, 041406(R) (2019). *Editors' Suggestion*



Biorthogonal bulk-boundary correspondence

In first-order topological systems

Flore K. Kunst, Elisabet Edvardsson, Jan Carl Budich, and Emil J. Bergholtz, Phys. Rev. Lett. **121**, 026808 (2018). *Editors' Suggestion*



And in higher-order models

Elisabet Edvardsson, **Flore K. Kunst**, and Emil J. Bergholtz, arXiv:1812.09060. *Phys. Rev. B Rapid*, in press.

In this talk

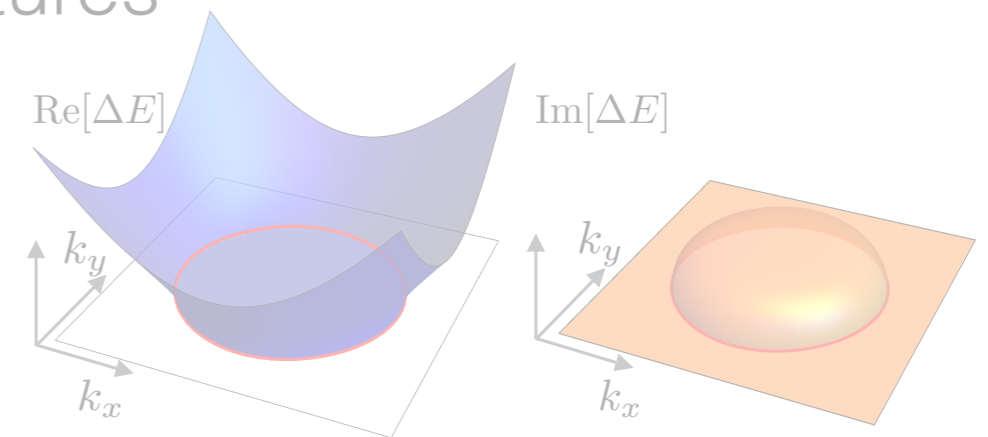
Discuss basics of non-Hermitian matrices

$$H = \begin{pmatrix} 0 & 1 \\ 0 & 0 \end{pmatrix}$$

Generic appearance of exceptional structures

In the presence of symmetries

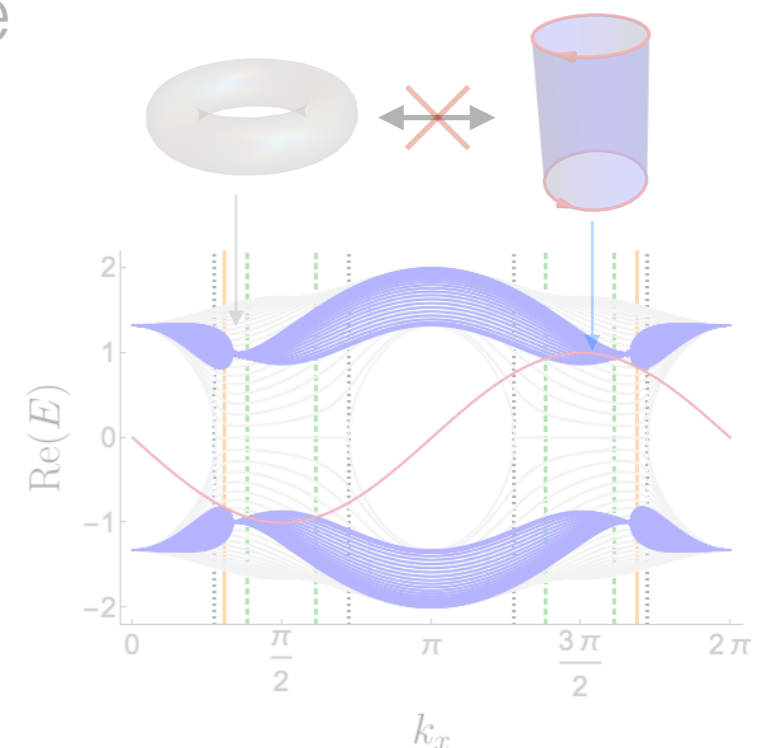
Jan Carl Budich, Johan Carlström, **Flore K. Kunst**, and
Emil J. Bergholtz, Phys. Rev. B **99**, 041406(R) (2019).
Editors' Suggestion



Biorthogonal bulk-boundary correspondence

In first-order topological systems

Flore K. Kunst, Elisabet Edvardsson, Jan Carl Budich,
and Emil J. Bergholtz, Phys. Rev. Lett. **121**, 026808
(2018). *Editors' Suggestion*



And in higher-order models

Elisabet Edvardsson, **Flore K. Kunst**, and Emil J.
Bergholtz, arXiv:1812.09060. *Phys. Rev. B Rapid*, in
press.

Basics

Simple 2x2 non-Hermitian model $H = \begin{pmatrix} 0 & \alpha \\ \beta & 0 \end{pmatrix}$ $\alpha \neq \beta^*$
 $H \neq H^\dagger$

Eigenvalues are generally complex $E_\pm = \pm \sqrt{\alpha\beta}$

The imaginary part is associated with a lifetime $\text{Im}(E) \sim 1/\tau$

Non-orthonormal eigenvectors

$$H |\Psi_\pm^R\rangle = E_\pm |\Psi_\pm^R\rangle \quad \langle \Psi_\pm^L | H = E_\pm \langle \Psi_\pm^L | \quad \Psi_\pm^R \propto \begin{pmatrix} \sqrt{\alpha} \\ \pm \sqrt{\beta} \end{pmatrix}$$

Right and left eigenvectors are inequivalent

$$(\Psi_i^L)^\dagger \neq \Psi_i^R \quad \Psi_\pm^L \propto (\sqrt{\beta} \quad \pm \sqrt{\alpha})$$

Choose to form a biorthogonal set when $\alpha\beta \neq 0$ $\langle \Psi_i^L | \Psi_j^R \rangle = \delta_{ij}$

Degeneracy

The energy is doubly degenerate for $\beta = 0$

$$H = \begin{pmatrix} 0 & 1 \\ 0 & 0 \end{pmatrix}$$

Only one eigenvector remains

$$\Psi^R = \begin{pmatrix} 1 \\ 0 \end{pmatrix}$$

$$\Psi^L = (0 \ 1)$$

The Hamiltonian is defective

The eigenvectors coalesce, i.e., the geometric multiplicity is not equal to the algebraic multiplicity

Such degeneracies are called exceptional points

In this talk

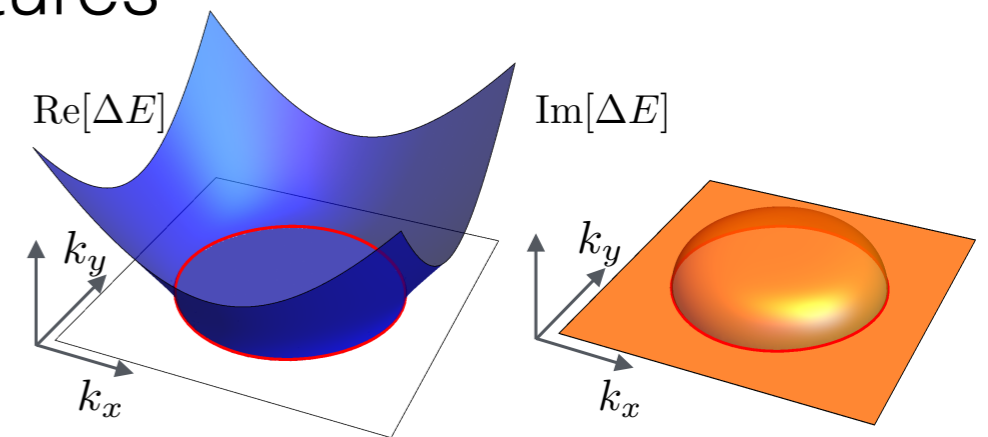
Discuss basics of non-Hermitian matrices

$$H = \begin{pmatrix} 0 & 1 \\ 0 & 0 \end{pmatrix}$$

Generic appearance of exceptional structures

In the presence of symmetries

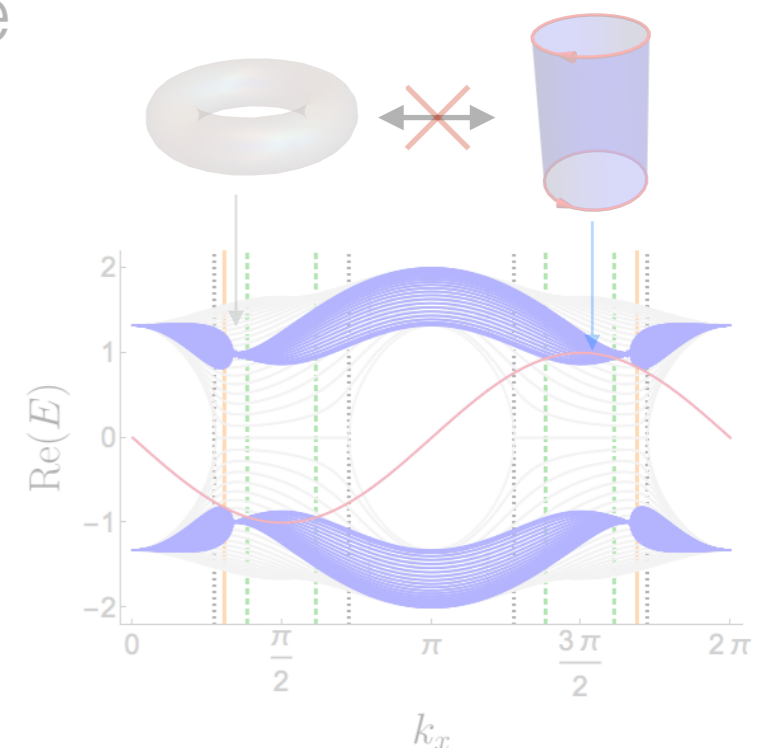
Jan Carl Budich, Johan Carlström, **Flore K. Kunst**, and
Emil J. Bergholtz, Phys. Rev. B **99**, 041406(R) (2019).
Editors' Suggestion



Biorthogonal bulk-boundary correspondence

In first-order topological systems

Flore K. Kunst, Elisabet Edvardsson, Jan Carl Budich,
and Emil J. Bergholtz, Phys. Rev. Lett. **121**, 026808
(2018). *Editors' Suggestion*



And in higher-order models

Elisabet Edvardsson, **Flore K. Kunst**, and Emil J.
Bergholtz, arXiv:1812.09060. *Phys. Rev. B Rapid*, in
press.

Hermitian case

In the Hermitian case, two bands cross generically in three dimensions

Generic two-band model

$$H(\mathbf{k}) = \begin{pmatrix} d_0(\mathbf{k}) + d_z(\mathbf{k}) & d_x(\mathbf{k}) - id_y(\mathbf{k}) \\ d_x(\mathbf{k}) + id_y(\mathbf{k}) & d_0(\mathbf{k}) - d_z(\mathbf{k}) \end{pmatrix} \\ = \mathbf{d}(\mathbf{k}) \cdot \boldsymbol{\sigma} + d_0(\mathbf{k})\sigma_0$$

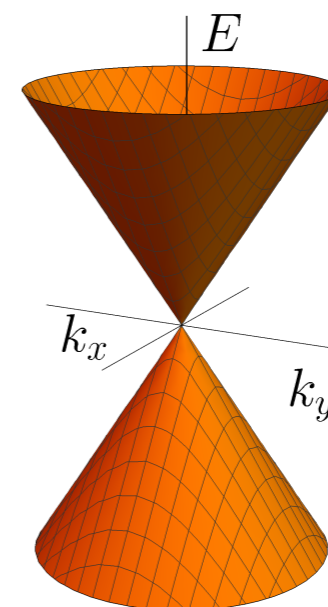
Eigenvalues $E_{\pm}(\mathbf{k}) = d_0(\mathbf{k}) \pm \sqrt{d_x^2(\mathbf{k}) + d_y^2(\mathbf{k}) + d_z^2(\mathbf{k})}$

Need to tune three parameters to find a degeneracy

Generic in three dimensions, but requires fine tuning in two dimensions

Example: Weyl node

$$H(\mathbf{k}) = v\mathbf{k} \cdot \boldsymbol{\sigma}$$



Non-Hermitian case

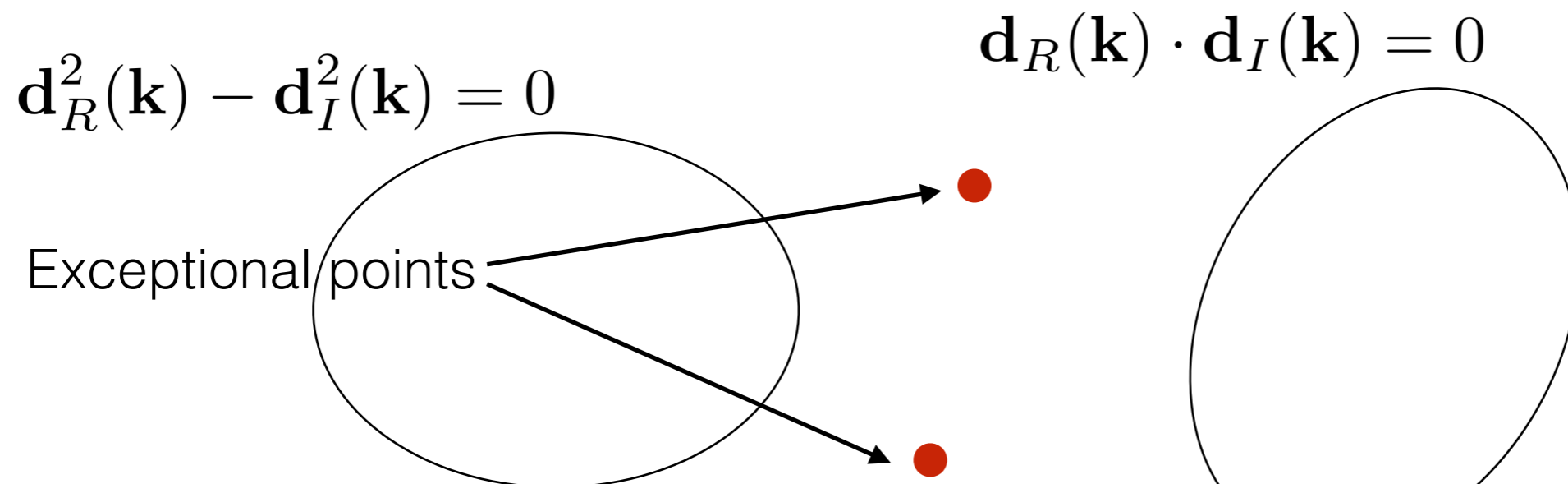
In the non-Hermitian case, two bands cross generically in two dimensions

Generic two-band model $H(\mathbf{k}) = \mathbf{d}(\mathbf{k}) \cdot \boldsymbol{\sigma}$ $\mathbf{d}(\mathbf{k}) = \mathbf{d}_R(\mathbf{k}) + i\mathbf{d}_I(\mathbf{k})$

Eigenvalues $E_{\pm}(\mathbf{k}) = \pm \sqrt{\mathbf{d}_R^2(\mathbf{k}) - \mathbf{d}_I^2(\mathbf{k}) + 2i\mathbf{d}_R(\mathbf{k}) \cdot \mathbf{d}_I(\mathbf{k})}$

Need to tune two parameters to find a degeneracy

Generic in two dimensions

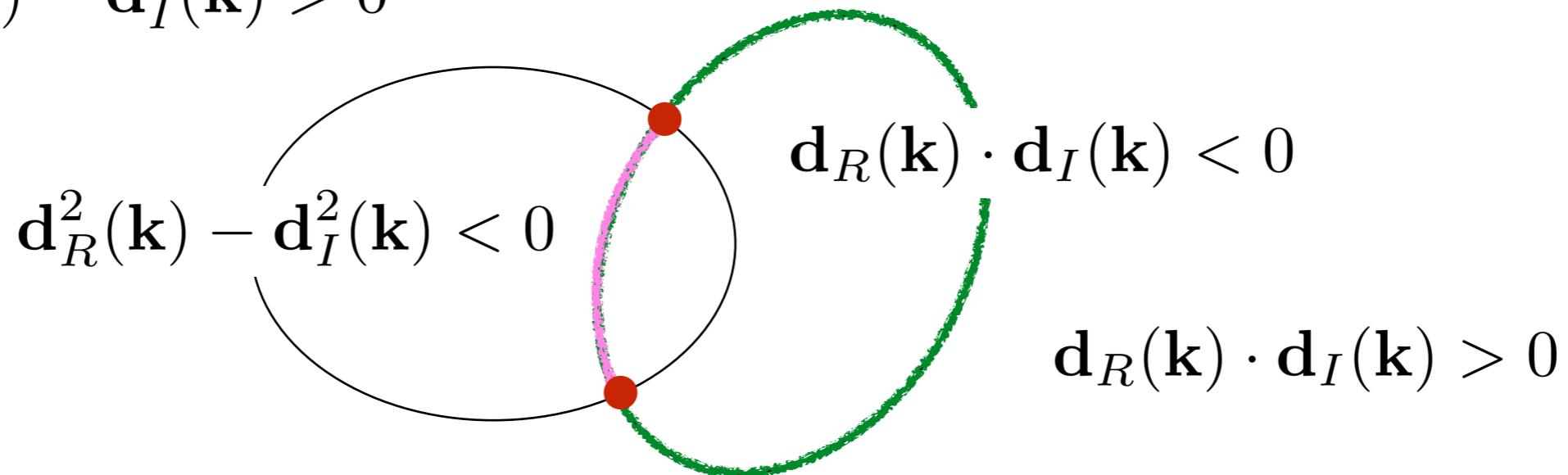


Generic Fermi arcs

Generic Fermi arcs appear

$$E_{\pm}(\mathbf{k}) = \pm \sqrt{\mathbf{d}_R^2(\mathbf{k}) - \mathbf{d}_I^2(\mathbf{k}) + 2i\mathbf{d}_R(\mathbf{k}) \cdot \mathbf{d}_I(\mathbf{k})}$$

$$\mathbf{d}_R^2(\mathbf{k}) - \mathbf{d}_I^2(\mathbf{k}) > 0$$



Fermi arc: $\text{Re}(E) = 0$

$$\mathbf{d}_R(\mathbf{k}) \cdot \mathbf{d}_I(\mathbf{k}) = 0$$

$$\mathbf{d}_R^2(\mathbf{k}) - \mathbf{d}_I^2(\mathbf{k}) < 0$$

i-Fermi arc: $\text{Im}(E) = 0$

$$\mathbf{d}_R(\mathbf{k}) \cdot \mathbf{d}_I(\mathbf{k}) = 0$$

$$\mathbf{d}_R^2(\mathbf{k}) - \mathbf{d}_I^2(\mathbf{k}) > 0$$

Exceptional points

Exceptional points are non-analytical

Explicit example

$$H(\mathbf{k}) = k_x \sigma_x + k_y \sigma_y + i\gamma \sigma_x$$

$$E_{\pm}(\mathbf{k}) = \pm \sqrt{k_x^2 + k_y^2 - \gamma^2 + 2i\gamma k_x}$$

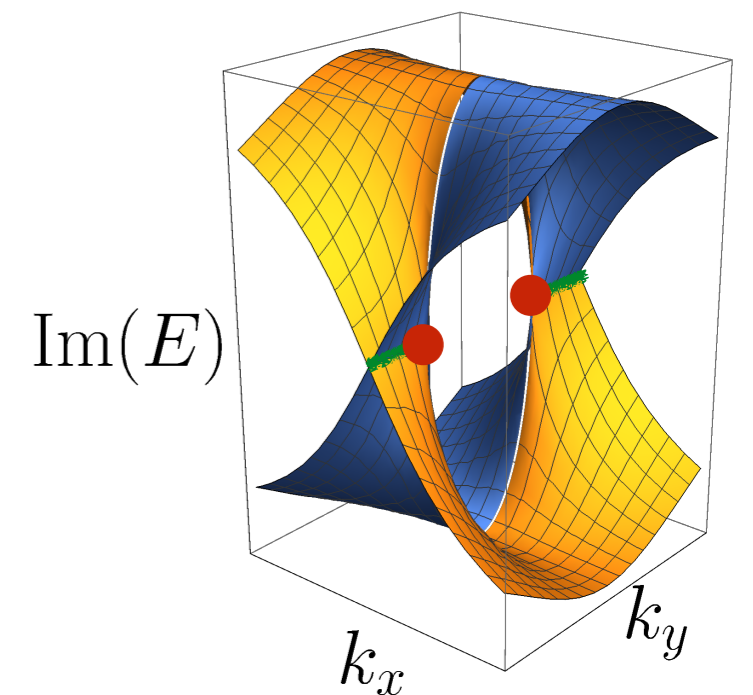
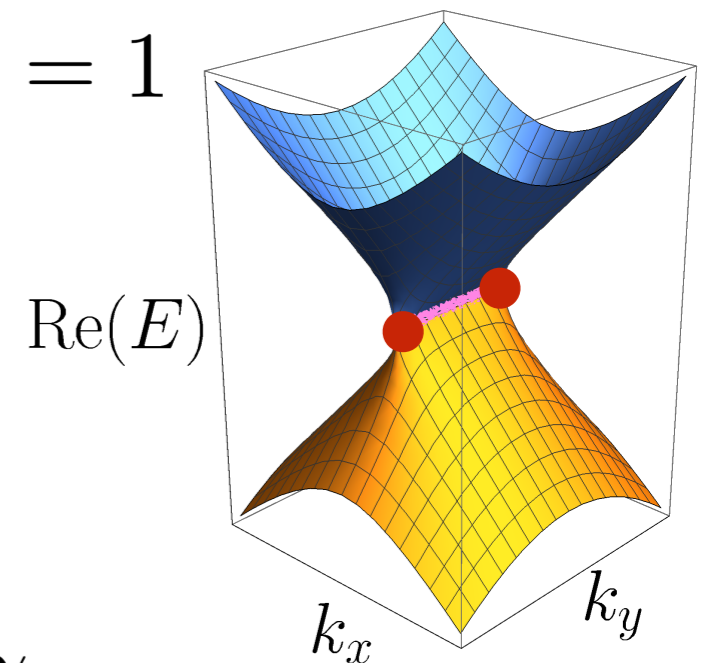
Exceptional points appear when $k_x = 0$ and $k_y = \pm\gamma$

They are connected by Fermi arcs

Expanding around the exceptional point yields

$$|E| \sim \sqrt{|\mathbf{k} - \mathbf{k}_{\text{EP}}|}$$

$$\gamma = 1$$



Symmetries

43 symmetry classes exist for non-Hermitian systems

Bernard and LeClair, arXiv:cond-mat/0110649 (2001).

An example: $H = qH^\dagger q^{-1} \quad q^\dagger q^{-1} = qq^\dagger = \mathbb{I}$

This is a trivial, unitary transformation in the Hermitian case

Generic two-band model: $H = \mathbf{d} \cdot \boldsymbol{\sigma} + d_0 \sigma_0$

Choice one: $q = \sigma_0 \longrightarrow$ Makes the Hamiltonian Hermitian

Choice two: $q = \sigma_x \longrightarrow d_x, d_0 \in \mathbb{R} \quad d_y, d_z \in i\mathbb{R}$

$$\longrightarrow \mathbf{d}_R \cdot \mathbf{d}_I = 0$$

$$\longrightarrow E_{\pm} = \pm \sqrt{\mathbf{d}_R^2 - \mathbf{d}_I^2}$$

Generic exceptional surfaces

We only need to tune one parameter to find a degeneracy

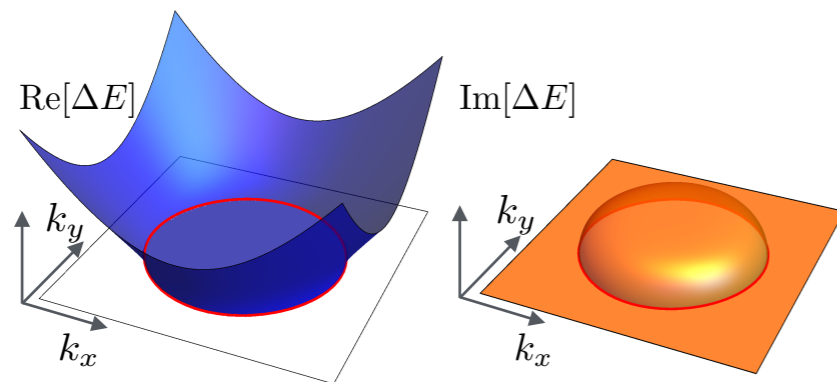
1D: generic exceptional points

2D: generic exceptional lines

3D: generic exceptional surfaces

In the presence of symmetries, exceptional structures of $d - 1$ dimensions appear generically in d -dimensional systems

→ They form boundaries for d -dimensional Fermi volumes



$$d_x(\mathbf{k}) = (2 - \cos k_x - \cos k_y) \quad d_z(\mathbf{k}) = i/4$$

This is drastically different from the Hermitian case

In this talk

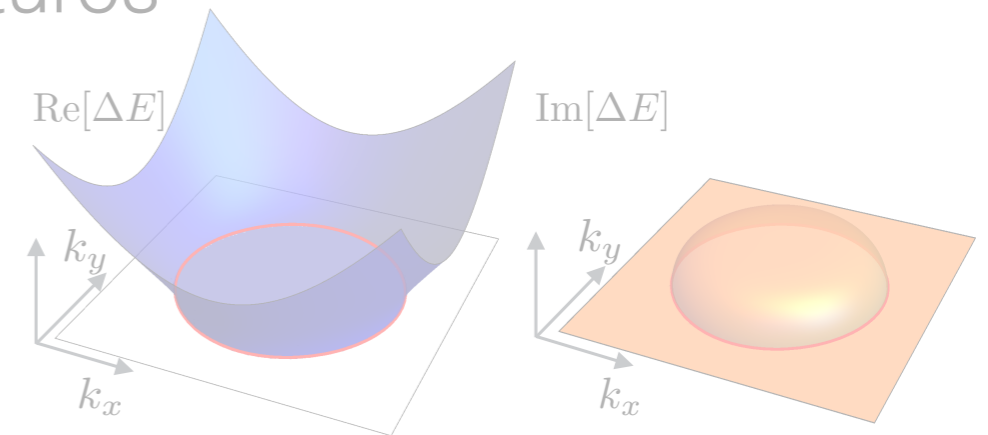
Discuss basics of non-Hermitian matrices

$$H = \begin{pmatrix} 0 & 1 \\ 0 & 0 \end{pmatrix}$$

Generic appearance of exceptional structures

In the presence of symmetries

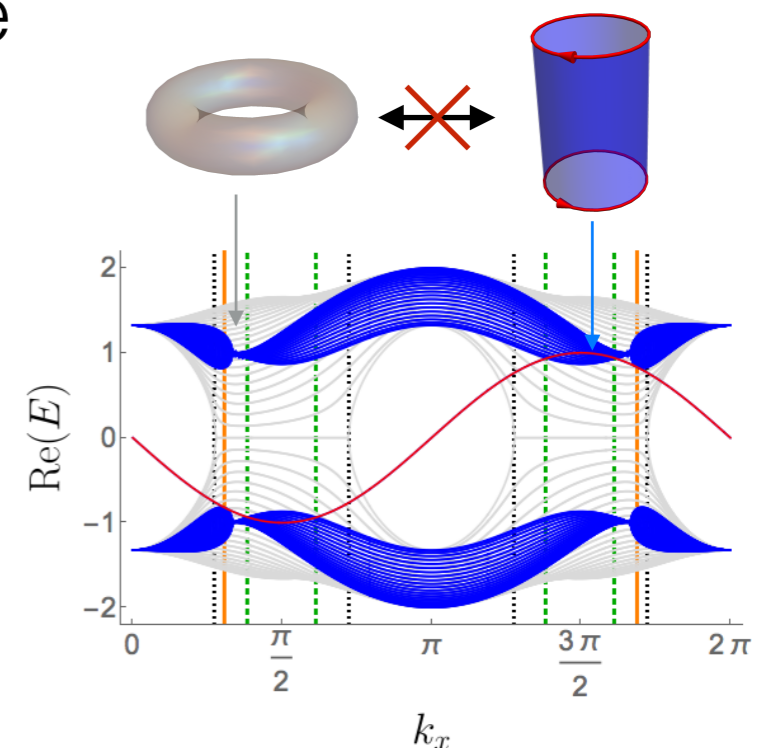
Jan Carl Budich, Johan Carlström, **Flore K. Kunst**, and
Emil J. Bergholtz, Phys. Rev. B **99**, 041406(R) (2019).
Editors' Suggestion



Biorthogonal bulk-boundary correspondence

In first-order topological systems

Flore K. Kunst, Elisabet Edvardsson, Jan Carl Budich,
and Emil J. Bergholtz, Phys. Rev. Lett. **121**, 026808
(2018). *Editors' Suggestion*

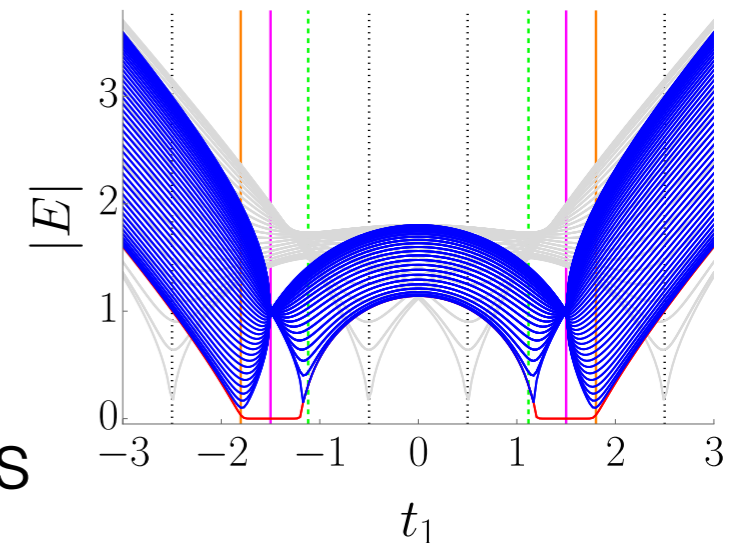
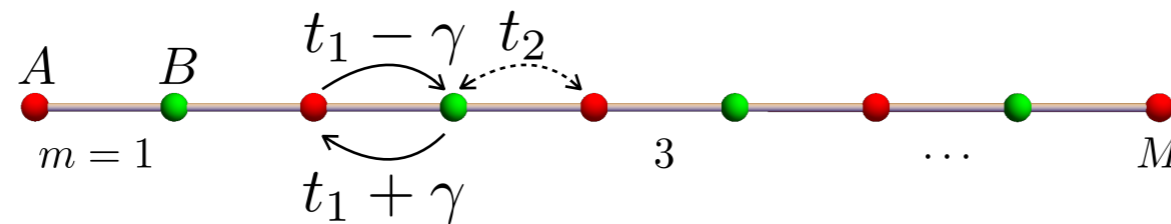


And in higher-order models

Elisabet Edvardsson, **Flore K. Kunst**, and Emil J.
Bergholtz, arXiv:1812.09060. *Phys. Rev. B Rapid*, in
press.

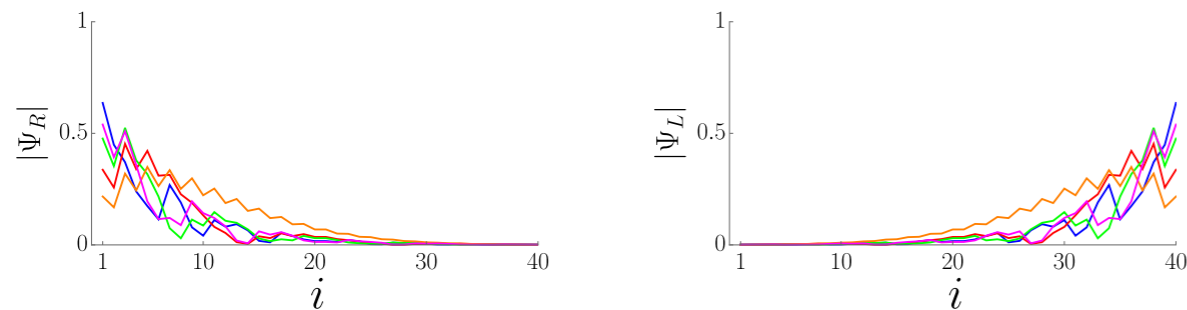
Breakdown of bulk-boundary correspondence

We study a non-Hermitian SSH chain



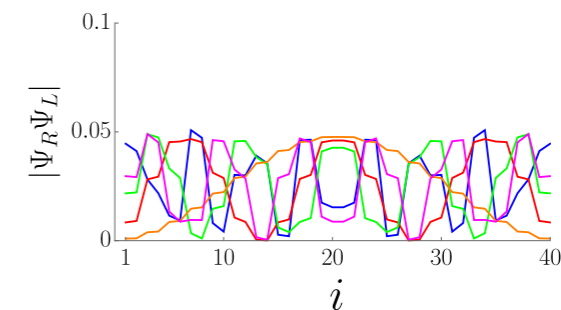
The spectrum is sensitive to boundary conditions

“Bulk” states pile up at the edges



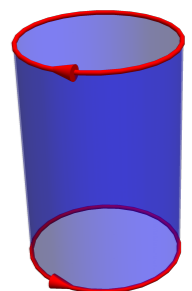
→ Non-Hermitian skin effect

But the biorthogonal product does not



Topological invariants fail to describe the physics

Need to consider a model with open boundary conditions from the start



Biorthogonal quantum mechanics

The eigensystem of a non-Hermitian Hamiltonian reads

$$H |\Psi_{R,n}\rangle = E_n |\Psi_{R,n}\rangle \quad H^\dagger |\Psi_{L,n}\rangle = E_n^* |\Psi_{L,n}\rangle$$

Away from the exceptional points, a complete biorthonormal basis can be formed $\langle \Psi_{L,n} | \Psi_{R,m} \rangle = \delta_{n,m} \langle \Psi_{L,n} | \Psi_{R,n} \rangle = \delta_{n,m}$

The biorthogonal expectation value is used to find the eigenvalues

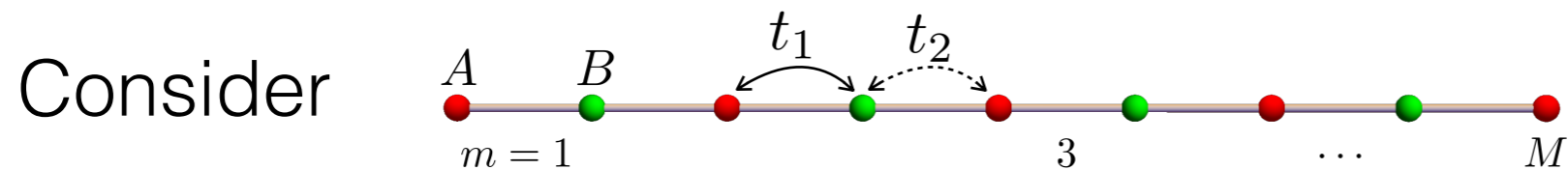
$$\langle \Psi_{L,n} | H | \Psi_{R,n} \rangle = E_n \quad E_n \in \mathbb{C}$$

The biorthogonal projection operator reads

$$\Pi_n = |\Psi_{R,n}\rangle \langle \Psi_{L,n}| \quad \sum_n \Pi_n = \mathbb{1}$$

Biorthogonal quantum mechanics can be seen as a generalization of ordinary quantum mechanics

Hermitian SSH chain



SSH, Phys. Rev. B **22**, 2099 (1980).

Real-space Hamiltonian with open boundary conditions

$$H^M = \begin{pmatrix} 0 & t_1 & 0 & 0 & 0 & 0 \\ t_1 & 0 & t_2 & 0 & 0 & 0 \\ 0 & t_2 & 0 & t_1 & 0 & 0 \\ 0 & 0 & t_1 & 0 & t_2 & 0 \\ 0 & 0 & 0 & t_2 & 0 & \dots \\ 0 & 0 & 0 & 0 & \vdots & \ddots \end{pmatrix} \quad \Psi \sim \begin{pmatrix} 1 \\ 0 \\ -t_1/t_2 \\ 0 \\ (-t_1/t_2)^2 \\ \vdots \end{pmatrix}$$

This is an exact wave-function solutions with energy $E = 0$

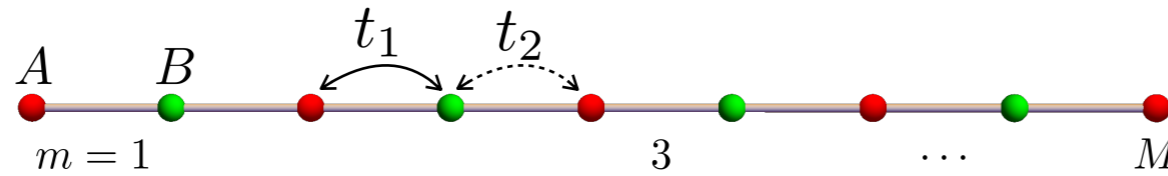
End state: localized to the left when $|t_1/t_2| < 1$

localized to the right when $|t_1/t_2| > 1$

Bulk state: $|t_1/t_2| = 1$

Hermitian SSH chain

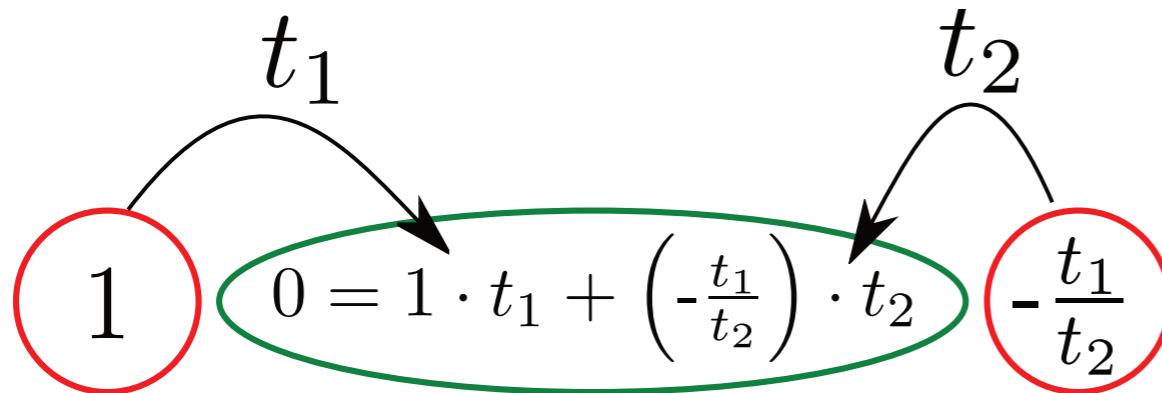
Consider



SSH, Phys. Rev. B **22**, 2099 (1980).

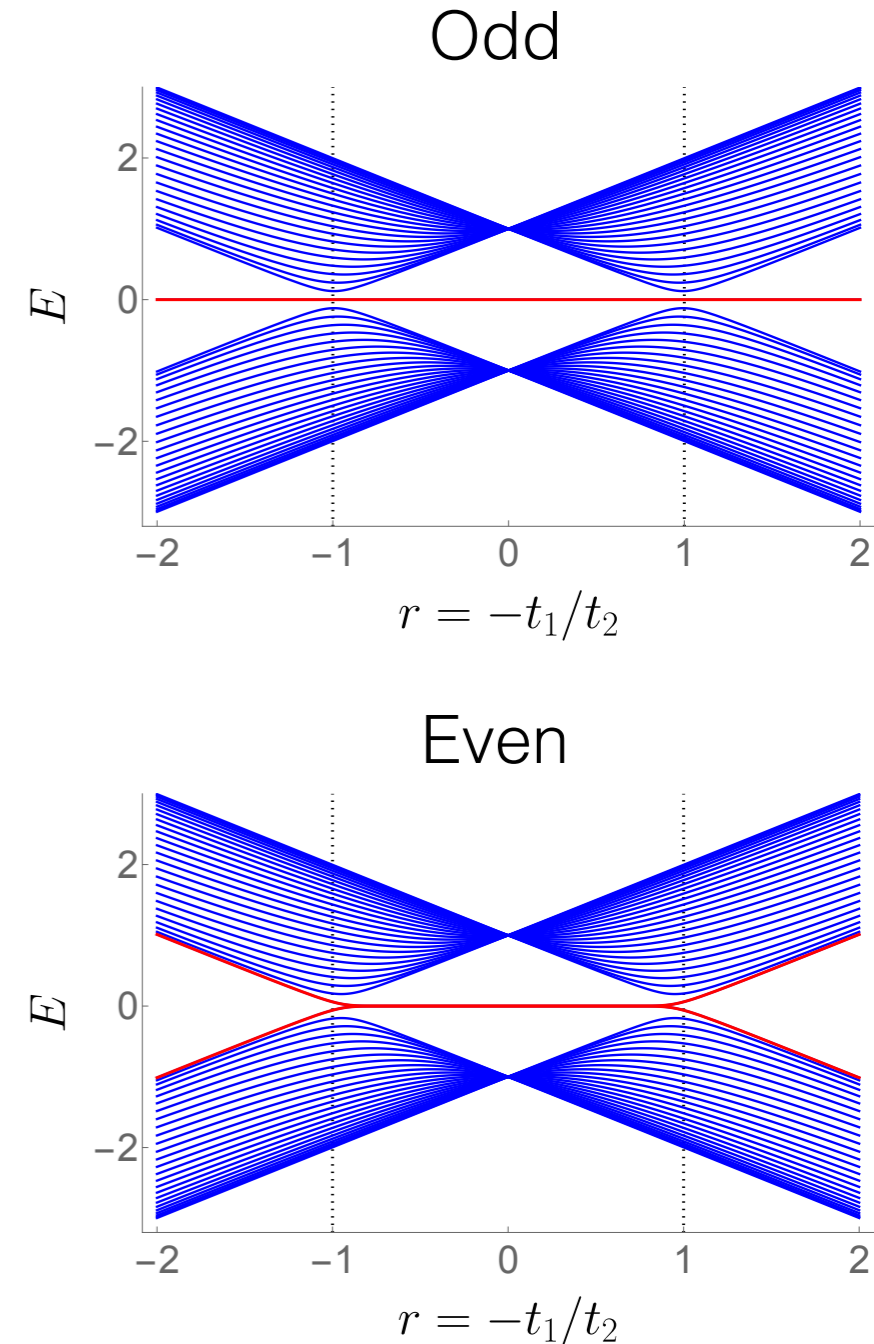
Destructive interference on B yields

$$|\psi_{\text{end}}\rangle = \mathcal{N} \sum_{m=1}^M \left(-\frac{t_1}{t_2}\right)^m c_{A,m}^\dagger |0\rangle$$



Exact solution with $E = 0$ broken unit cell

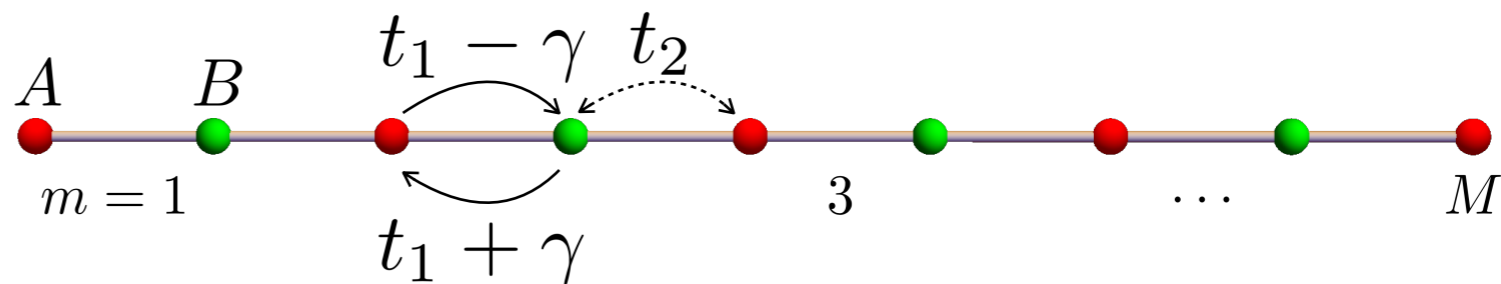
Approximate solution without broken unit cell



Kunst, Trescher, and Bergholtz, Phys. Rev. B **96**, 085443 (2017).
Kunst, van Miert, and Bergholtz, Phys. Rev. B **97**, 241405(R) (2018).
Kunst, van Miert, and Bergholtz, Phys. Rev. B **99**, 085426 (2019).
Kunst, van Miert, and Bergholtz, Phys. Rev. B **99**, 085427 (2019).

Non-Hermitian SSH chain

Consider



Look for eigenstates of the form $|\Psi_R\rangle = \mathcal{N} \sum_{m=1}^M r_R^m c_{A,m}^\dagger |0\rangle$ $|\Psi_L\rangle = \mathcal{N} \sum_{m=1}^M r_L^m c_{A,m}^\dagger |0\rangle$

Exact destructive interference on B yields

$$\begin{array}{ccc}
 \begin{array}{c} t_1 - \gamma \\ \curvearrowright \\ \textcircled{1} \end{array} & \begin{array}{c} t_2 \\ \curvearrowleft \\ \textcircled{0 = 1 \cdot (t_1 - \gamma) + r_R \cdot t_2} \end{array} & \begin{array}{c} r_R \\ \textcircled{} \end{array} \\
 \longrightarrow & & \\
 r_R = -\frac{t_1 - \gamma}{t_2} & \neq & r_L = -\frac{t_1 + \gamma}{t_2}
 \end{array}$$

Weight of the wave function on each A motif

$$\langle \Pi_m \rangle_{\alpha, \alpha'} \equiv \langle \Psi_\alpha | \Pi_m | \Psi_{\alpha'} \rangle$$

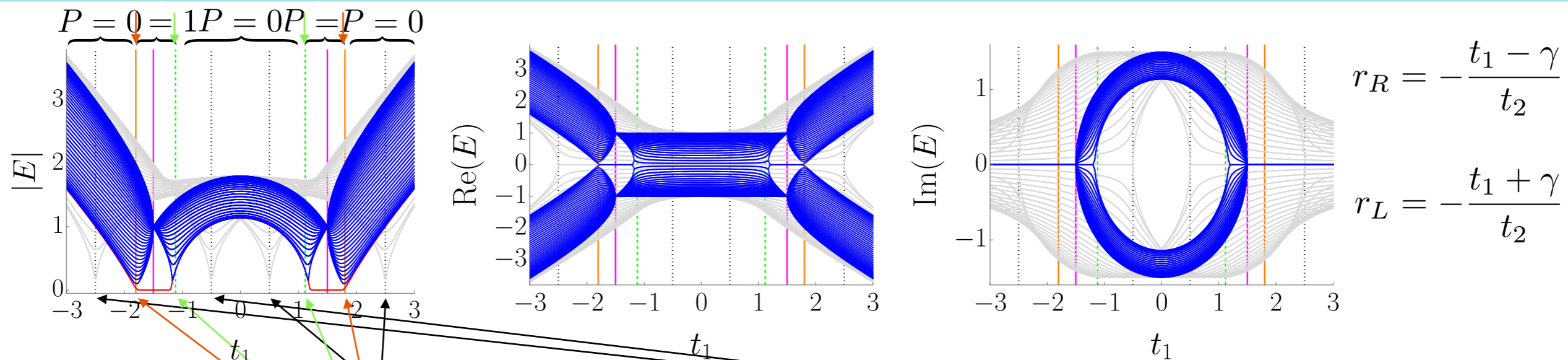
$$\Pi_m = |e_{A,m}\rangle \langle e_{A,m}| + |e_{B,m}\rangle \langle e_{B,m}|$$

$$\langle \Pi_m \rangle_{RR} \sim |r_R|^{2m}$$

$$\langle \Pi_m \rangle_{LL} \sim |r_L|^{2m}$$

$$\langle \Pi_m \rangle_{LR} \sim (r_L^* r_R)^m$$

Non-Hermitian SSH chain



$$|r_R| = 1 \longrightarrow t_1 = \pm t_2 + \gamma \quad |r_L| = 1 \longrightarrow t_1 = \pm t_2 - \gamma$$

$$|r_L^* r_R| = 1 \longrightarrow t_1 = \pm \sqrt{\gamma^2 + t_2^2}, \pm \sqrt{\gamma^2 - t_2^2}$$

→ Biorthogonal bulk-boundary correspondence

Biorthogonal polarization

$$P \equiv 1 - \lim_{M \rightarrow \infty} \left\langle \psi_L \left| \frac{\sum_m m \Pi_m}{M} \right| \psi_R \right\rangle$$

$$t_1 = \pm \gamma$$

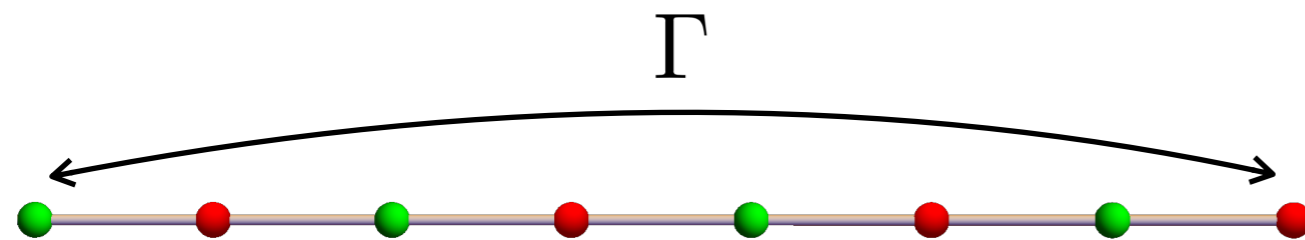
$P = 0$ when $|r_L^* r_R| > 1$

$P = 1$ when $|r_L^* r_R| < 1$

P jumps when $|r_L^* r_R| = 1$

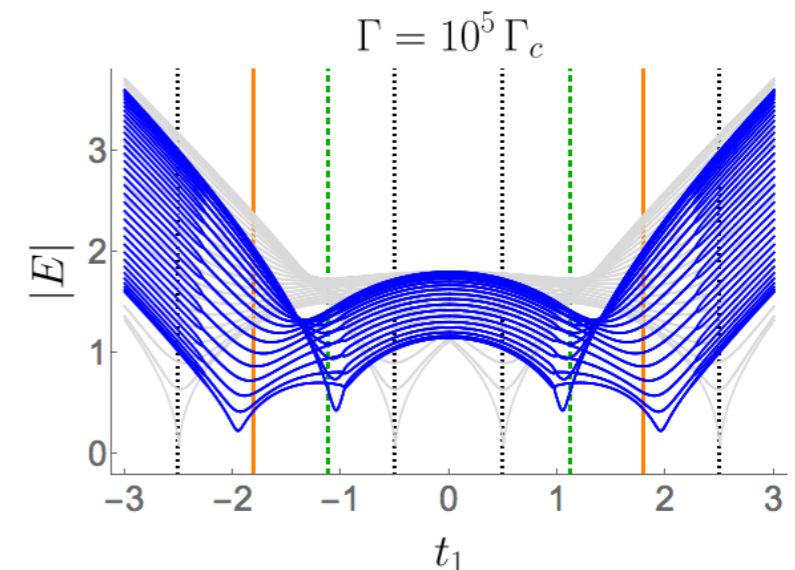
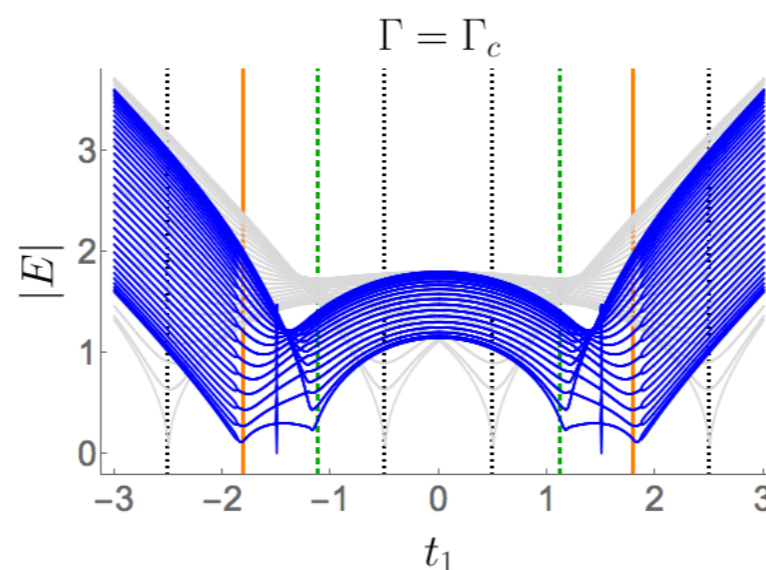
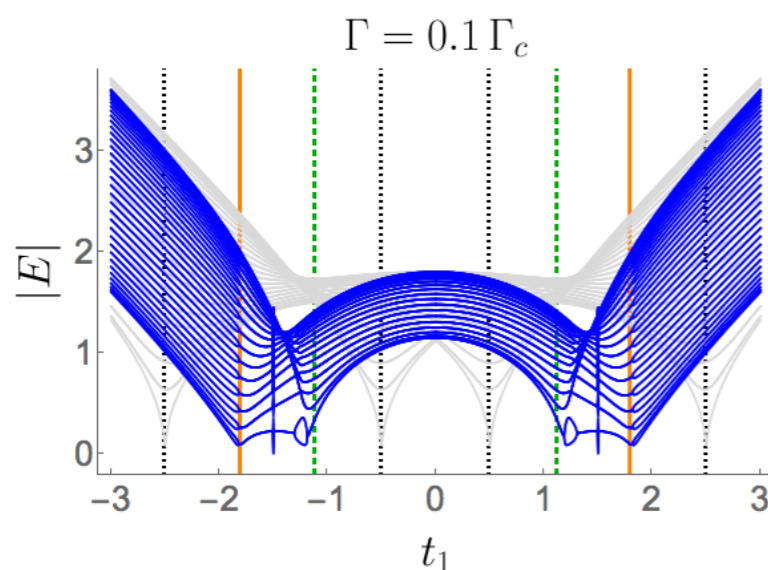
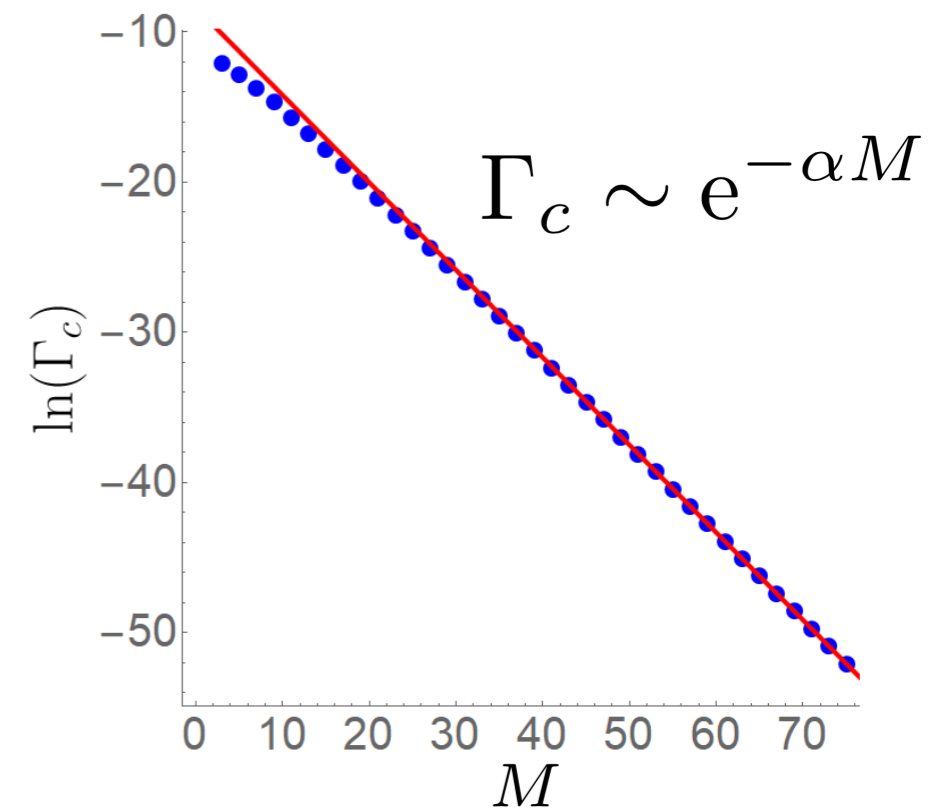
Boundary conditions

Couple the ends of the chain



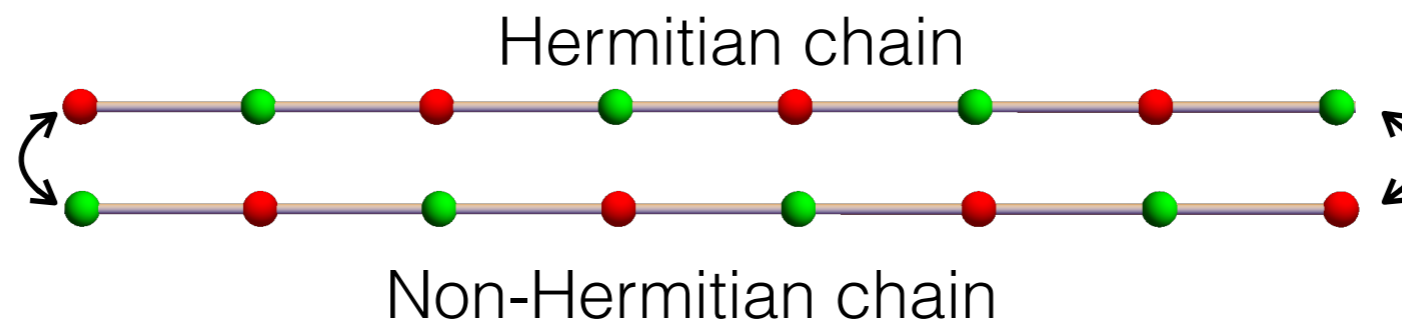
Crossover at exponentially small Γ

Understood from non-Hermitian skin effect

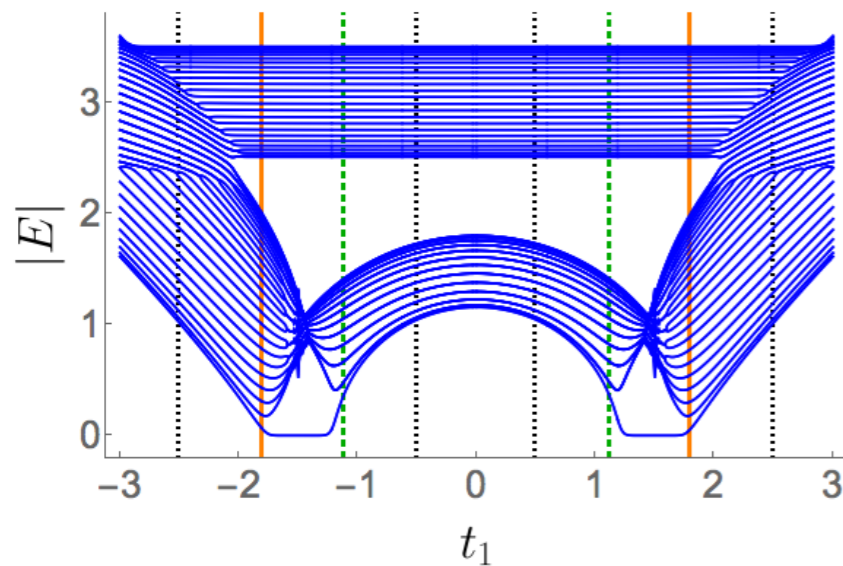


Domain wall

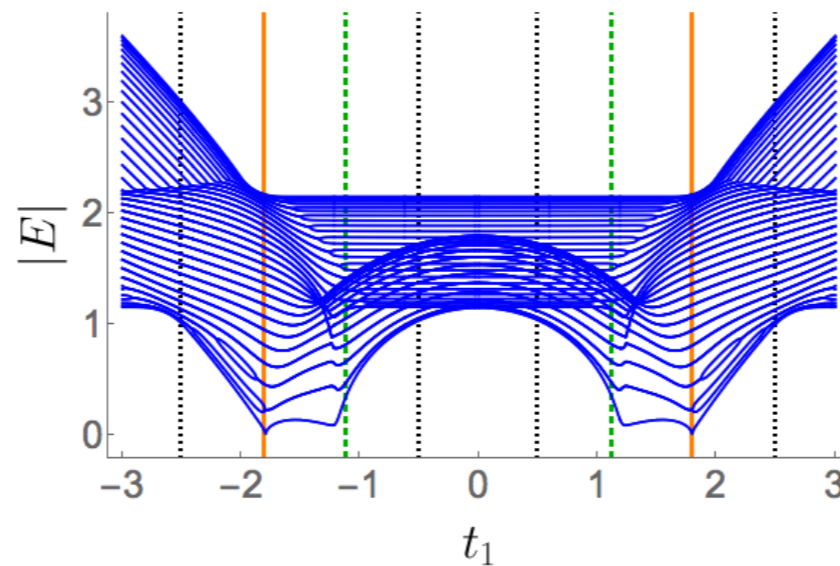
Couple the ends via a Hermitian chain



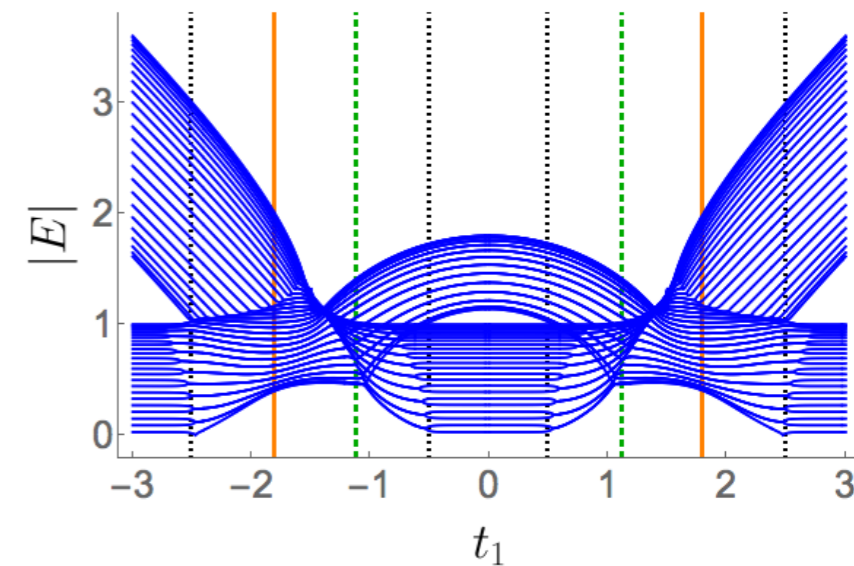
Large gap



Crossover gap



Gapless



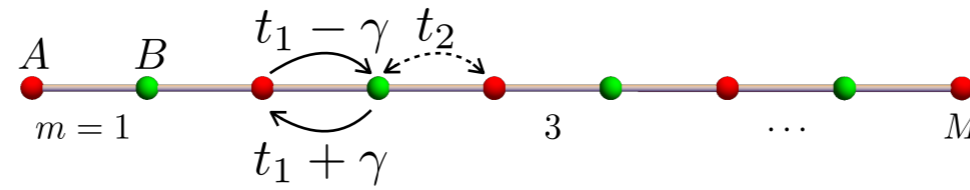
Non-Hermitian Chern insulator

Non-Hermitian
Chern insulator

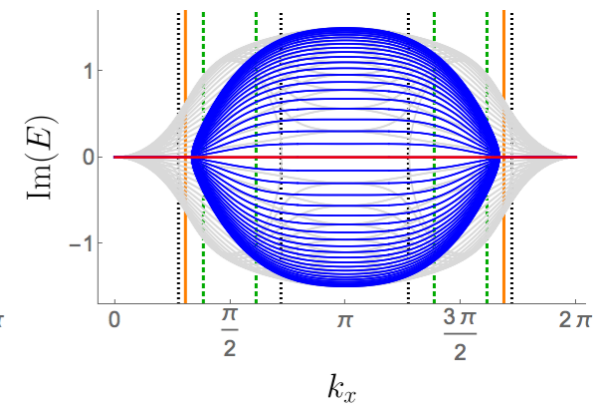
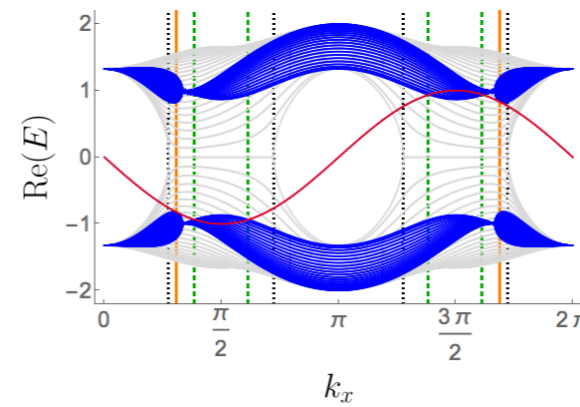
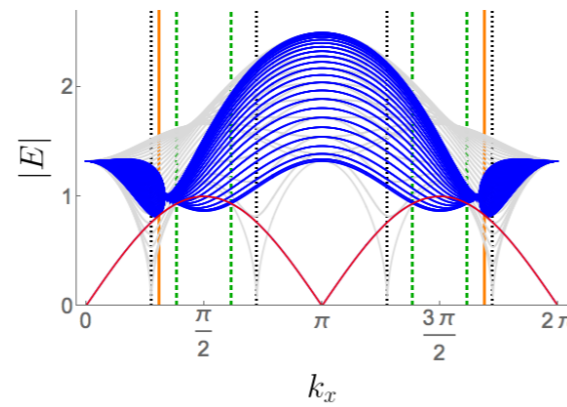
$$t_1 = t + \delta \cos(k)$$

$$t_2 = t - \delta \cos(k)$$

$$d_z(k) = -\Delta \sin(k)$$

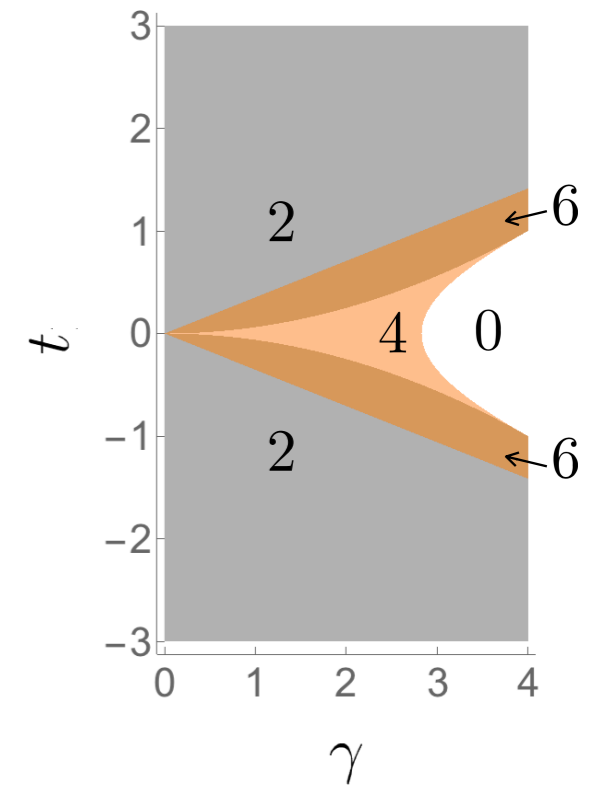
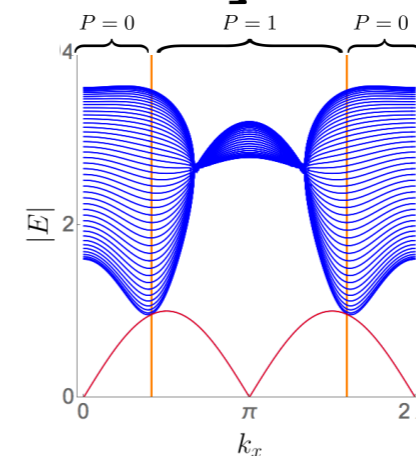
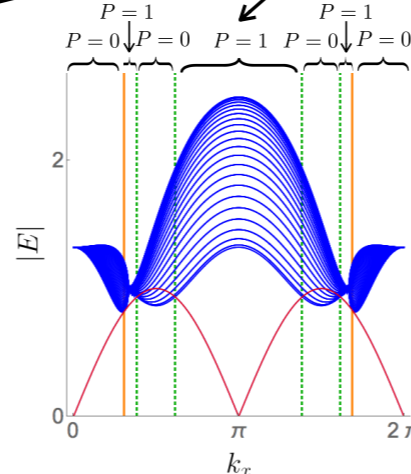
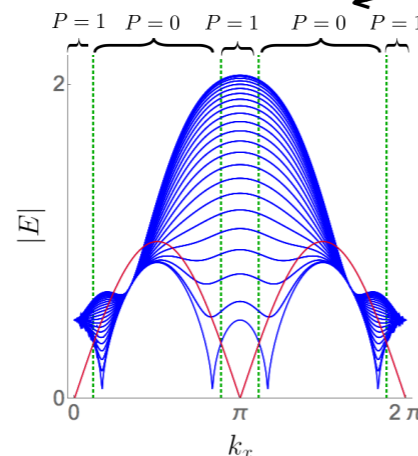
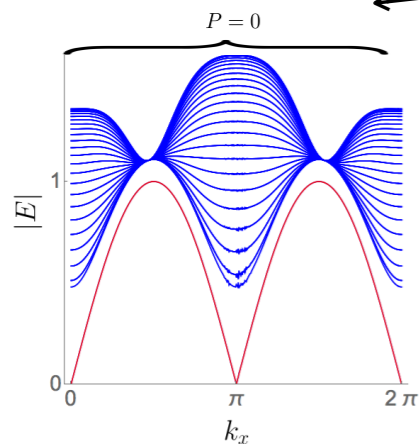
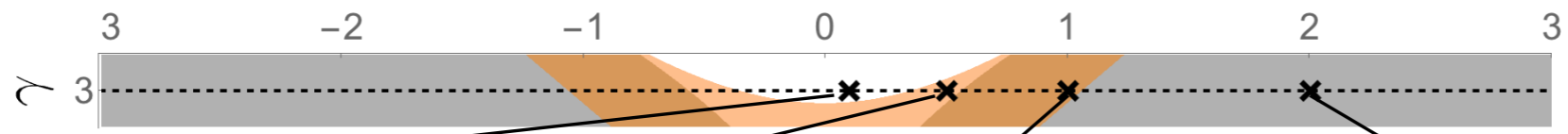


$$r_R = -\frac{t_1 - \gamma}{t_2} \quad r_L = -\frac{t_1 + \gamma}{t_2}$$



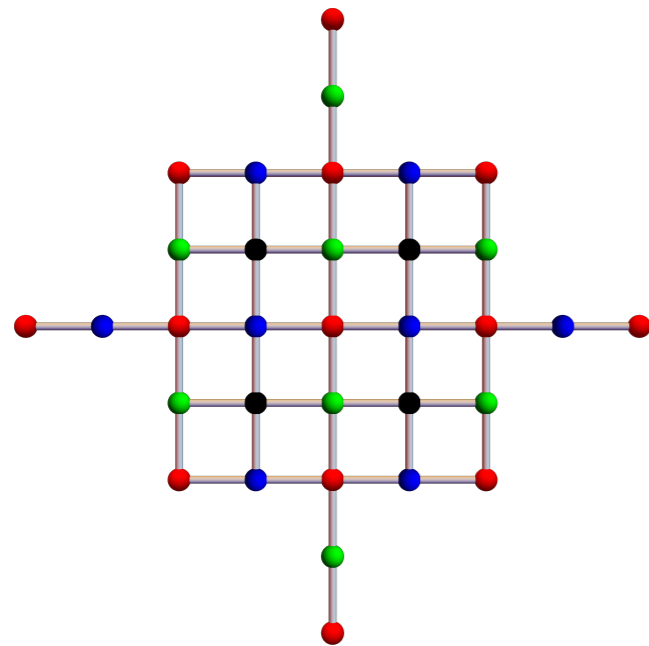
From $|r_L^* r_R| = 1$

$$\cos(k) = \frac{\gamma^2}{16t\delta}, \pm \sqrt{\frac{\gamma^2/8 - t^2}{\delta^2}}$$



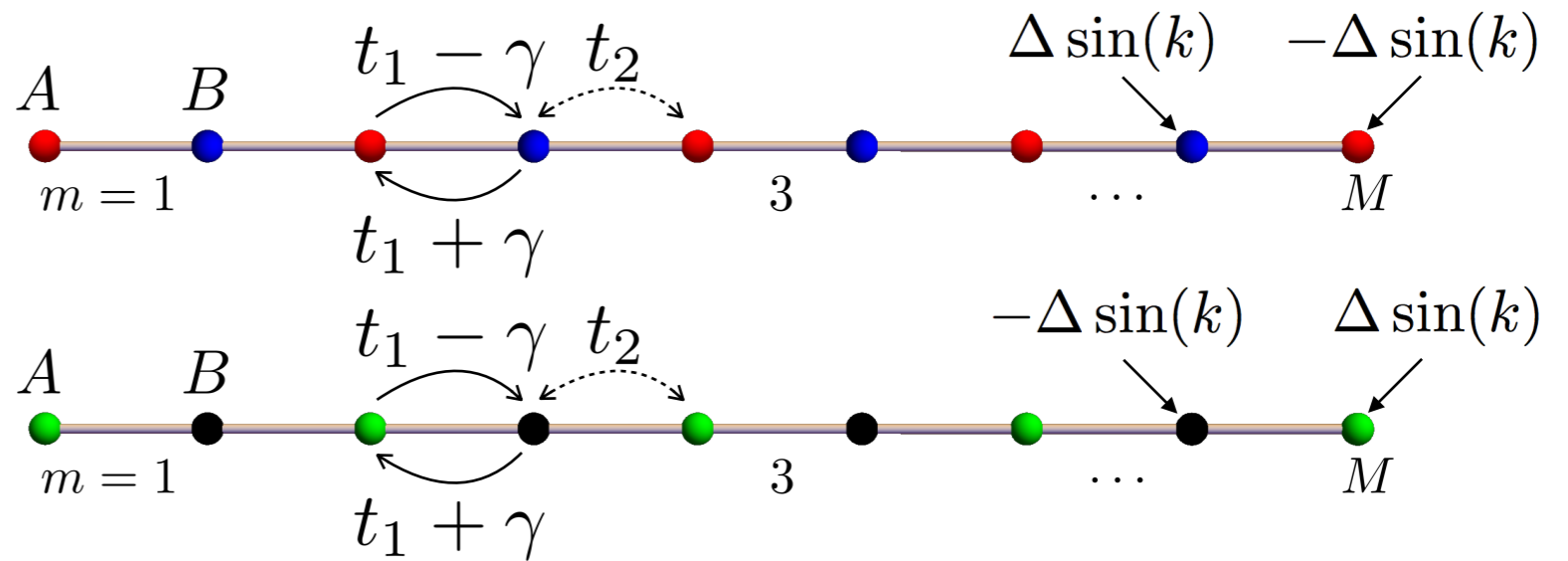
Further generalization

Consider a mirror symmetric lattice



$$t_1 = t + \delta \cos(k)$$

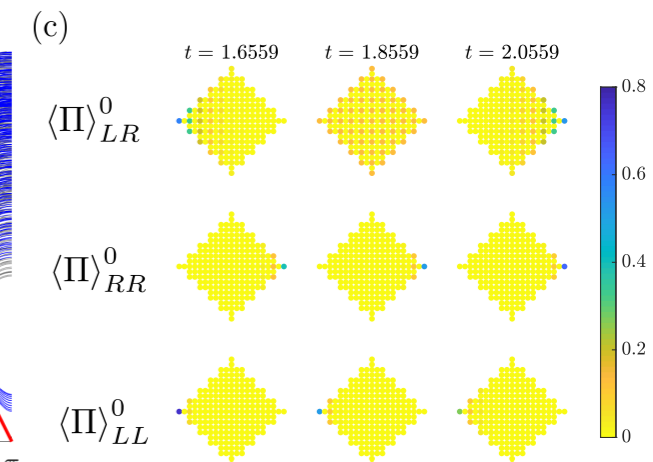
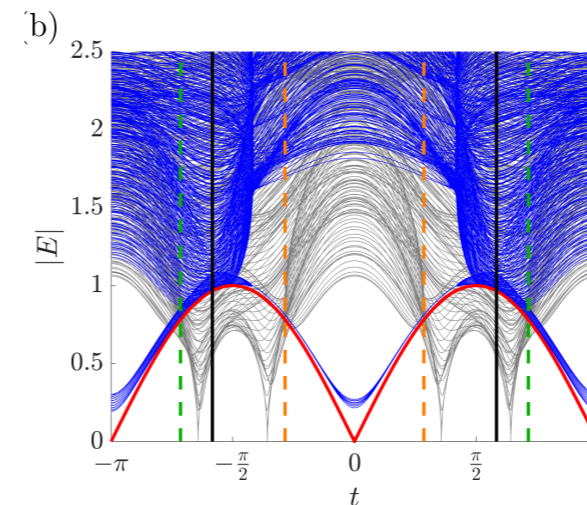
$$t_2 = t - \delta \cos(k)$$



$$|\Psi_R(k)\rangle = \mathcal{N}_R \sum_{m,m'} [r_R(k)]^m (-1)^{m'} c_{A,m,m'}^\dagger(k) |0\rangle$$

$$|\Psi_L(k)\rangle = \mathcal{N}_L \sum_{m,m'} [r_L(k)]^m (-1)^{m'} c_{A,m,m'}^\dagger(k) |0\rangle$$

$$r_R = -\frac{t_1 - \gamma}{t_2} \quad r_L = -\frac{t_1 + \gamma}{t_2}$$



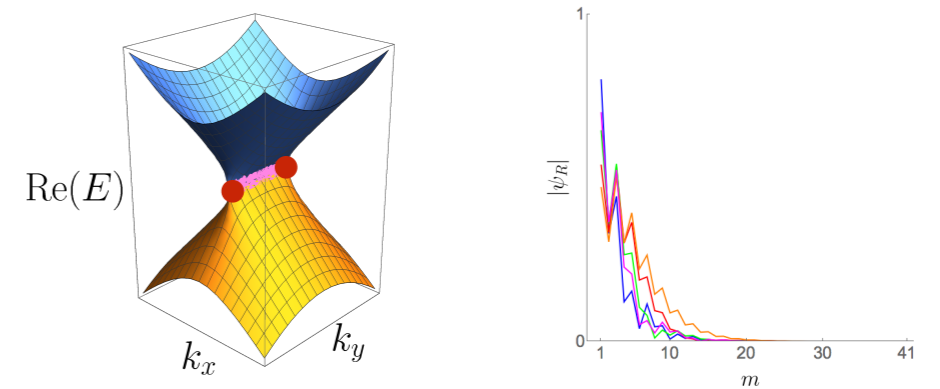
Kunst, van Miert, and Bergholtz, Phys. Rev. B **97**, 241405(R) (2018).

Kunst, van Miert, and Bergholtz, Phys. Rev. B **99**, 085426 (2019).

Edvardsson, Kunst, and Bergholtz, arXiv:1812.09060.

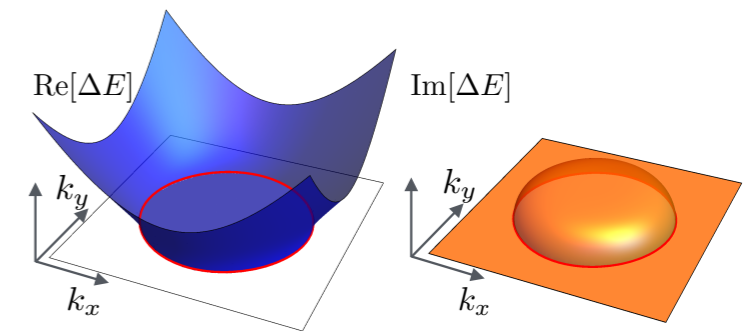
Conclusion

Non-Hermitian Hamiltonians possess many unexpected features, e.g., exceptional points, skin effect, ...



Gap closings are generic in 1D in the presence of symmetries

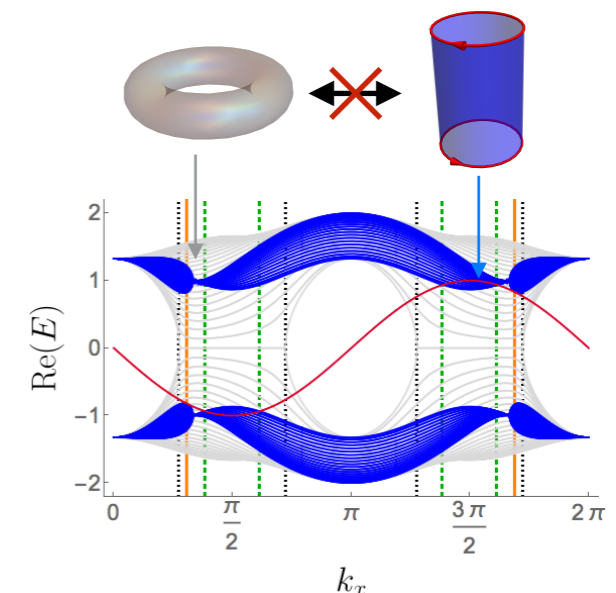
Jan Carl Budich, Johan Carlström, **Flore K. Kunst**, and Emil J. Bergholtz, Phys. Rev. B **99**, 041406(R) (2019). *Editors' Suggestion*



Biorthogonal bulk-boundary correspondence directly in systems with open boundaries

Flore K. Kunst, Elisabet Edvardsson, Jan Carl Budich and Emil J. Bergholtz, Phys. Rev. Lett. **121**, 026808 (2018). *Editors' Suggestion*

Edvardsson, **Kunst**, and Bergholtz, arXiv:1812.09060. *Phys. Rev. B Rapid, in press.*

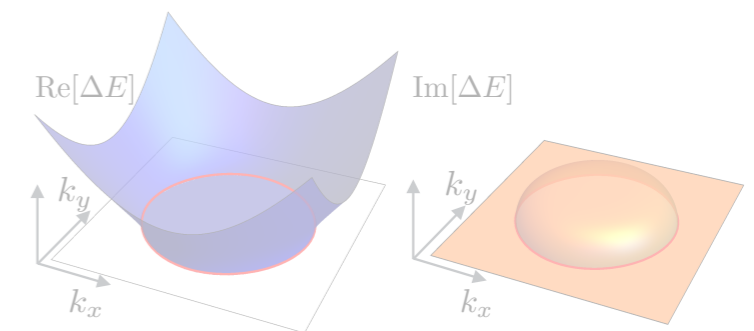
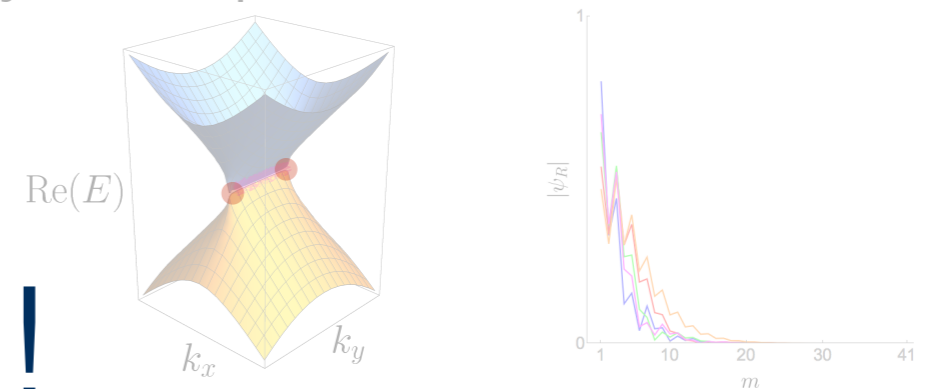


Conclusion

Non-Hermitian Hamiltonians possess many unexpected features, e.g., exceptional points, skin effect, ...

Gap closings are generic in 1D in the presence of symmetries

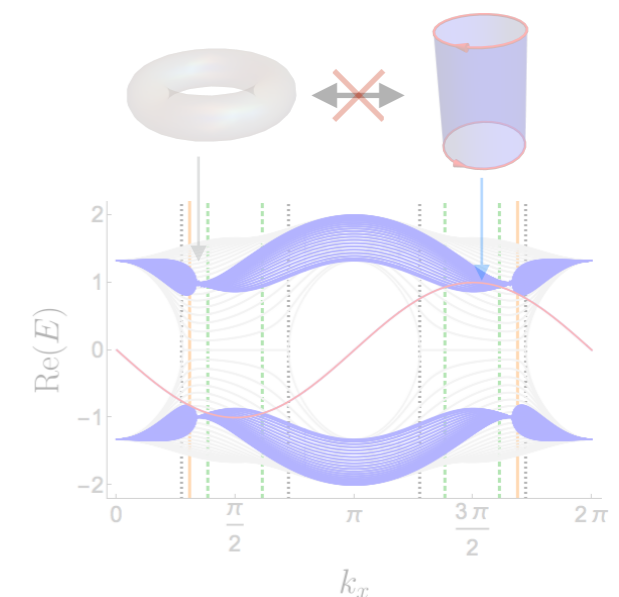
Jan Carl Budich, Johan Carlström, **Flore K. Kunst**, and Emil J. Bergholtz, Phys. Rev. B **99**, 041406(R) (2019). *Editors' Suggestion*



Biorthogonal bulk-boundary correspondence directly in systems with open boundaries

Flore K. Kunst, Elisabet Edvardsson, Jan Carl Budich and Emil J. Bergholtz, Phys. Rev. Lett. **121**, 026808 (2018). *Editors' Suggestion*

Edvardsson, **Kunst**, and Bergholtz, arXiv:1812.09060. *Phys. Rev. B Rapid, in press.*



Extra slides

Bernard-LeClair Classification

Bernard and LeClair, arXiv:cond-mat/0110649 (2001).

Four symmetry relations

$$P : H = -pHp^{-1}, \quad p^2 = \mathbb{I}$$

chiral symmetry

$$C : H = \epsilon_c c H^T c^{-1}, \quad c^T c^{-1} = \pm \mathbb{I}$$

{ time-reversal symmetry
particle-hole symmetry $\epsilon_i = \pm$

$$K : H = \epsilon_k k H^* k^{-1}, \quad k k^* = \pm \mathbb{I}$$

$$Q : H = \epsilon_q q H^\dagger q^{-1}, \quad q^\dagger q^{-1} = \mathbb{I}$$

pseudo Hermiticity

where p, c, k, q are unitary transformations, and $\epsilon_i = \pm$